

Khads[®] **KHADS-901**

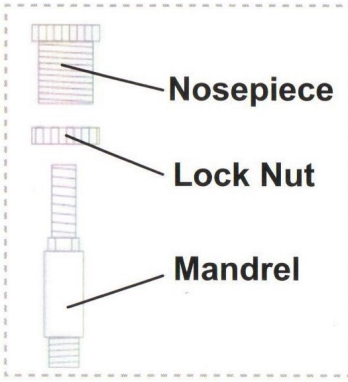
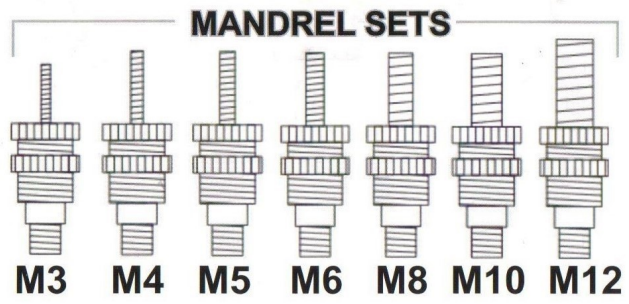
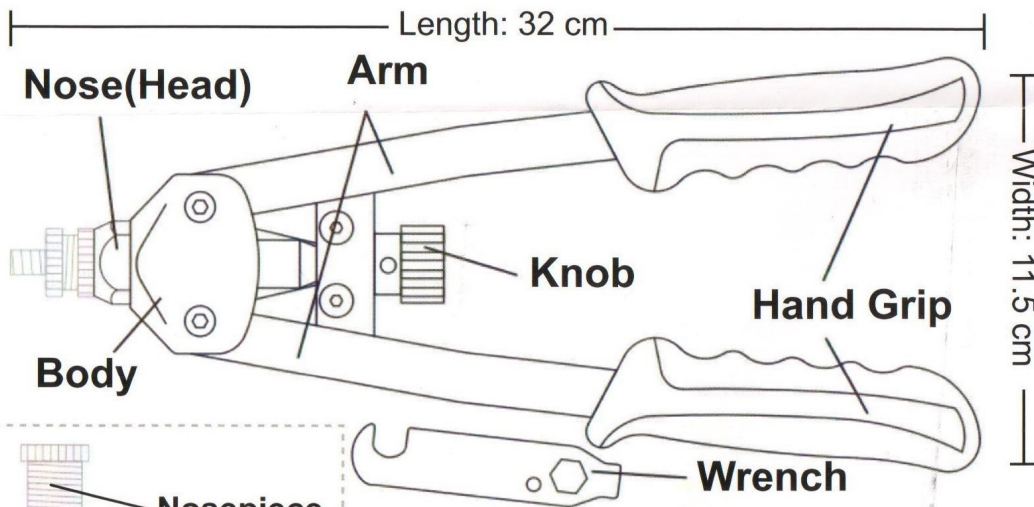
EFFORTLESS INDUSTRIAL NUT RIVETER

INTRODUCTION

This quality nut riveter tool is smaller than typical industrial nut riveter tool, it provide effortless functionality, nut riveter tool is used to install nut rivet into materials where is too thin to tapping for locking the screw.

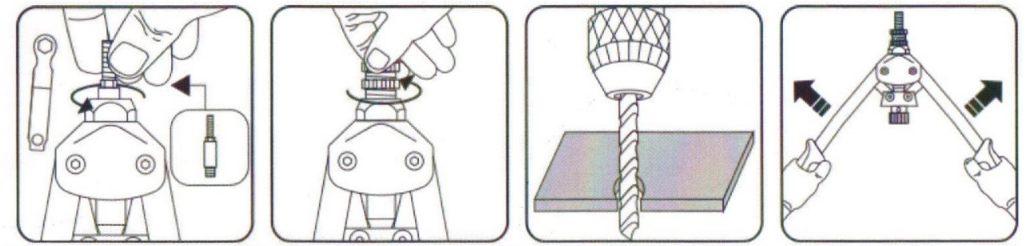
- Aluminum body, Cr-Mo handle, with two-tone hand grips
- Suitable for aluminum, steel and stainless steel rivet nuts
- Includes chrome molybdenum mandrels for structural rivet nuts M3, M4, M5, M6, M8, M10, M12

COMPONENT

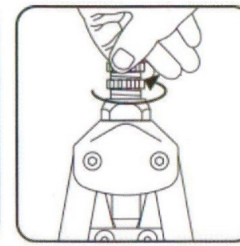


OPERATION

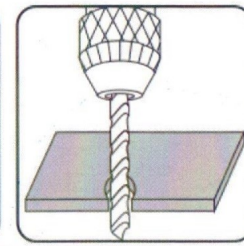
1. Screw the correct size mandrel into the tool body(counterclockwise), you may use the mandrel wrench to screw the mandrel tightly.
2. Screw the correct size nosepiece into the tool head(counterclockwise).
3. To bore a rivet hole in workpiece.
4. Open tool handle.
5. Screw rivet nut on the head of mandrel.
6. Insert the rivet nut into workpiece.
7. Squeeze tool handle and that will make rivet nut tightly clench the workpiece.
8. Unscrew the mandrel from rivet nut by turning the mandrel knob counter-clockwise.
9. Now you can fasten a screw in the material with the rivet nut.



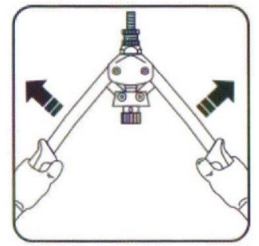
Step 1



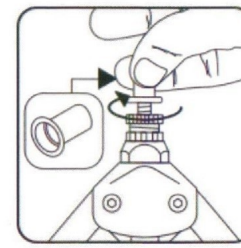
Step 2



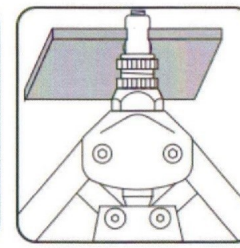
Step 3



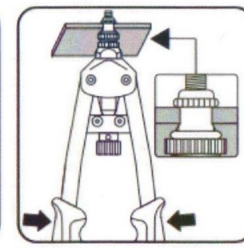
Step 4



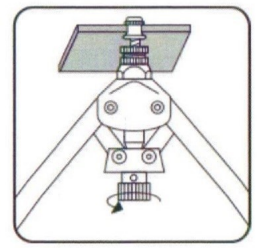
Step 5



Step 6



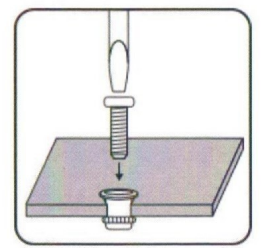
Step 7



Step 8

CAUTION: When applying rivet nuts to soft materials, it may be necessary to use the Lock Nut to prevent over-compression of the rivet nut which could distort or weaken the work piece.

NOTE: Adjust the nose piece in or out of the head of the tool until desired compression is attained, then lock in position by screwing the Lock Nut firmly against head.



Step 9