



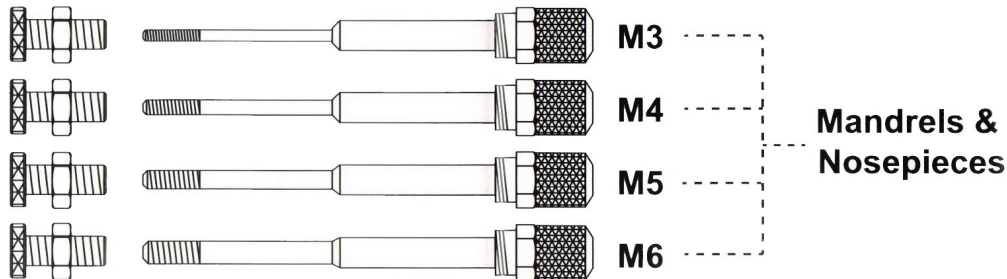
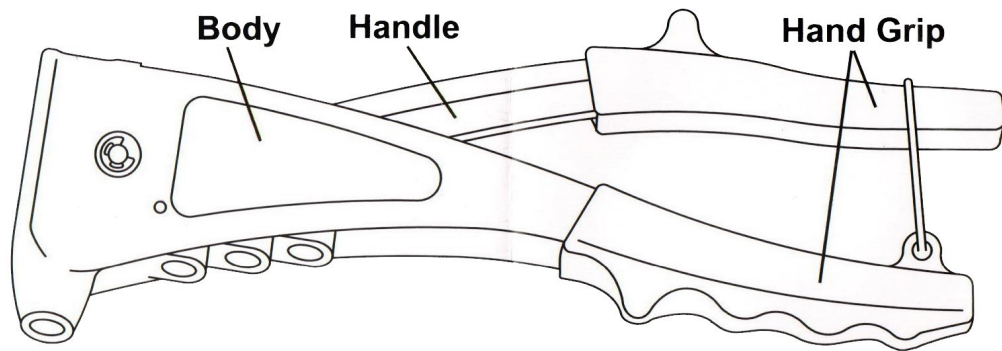
HEAVY DUTY RIVETER NUT TOOL

INTRODUCTION

This is a high quality nut riveter tool, it is used to install nut rivet into materials where is too thin to tapping for locking the screw.

- Aluminum body, high grade alloy steel mandrel
- Suitable for aluminum, steel and stainless steel nut rivets
- Includes 4 nosepieces and mandrels for structural nut rivets M3, M4, M5, M6

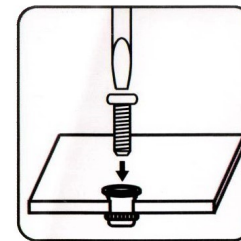
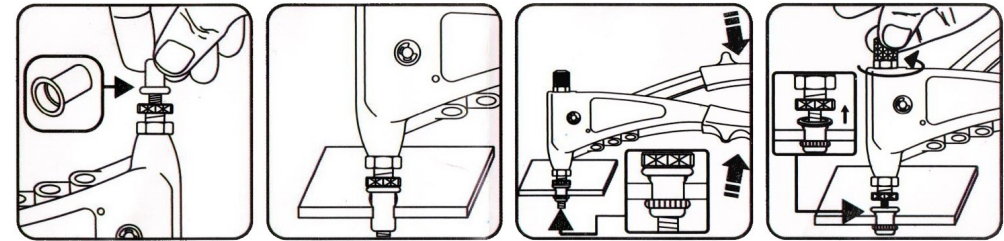
COMPONENT



WARNING Always wear eye protection when operating the riveter.

OPERATION

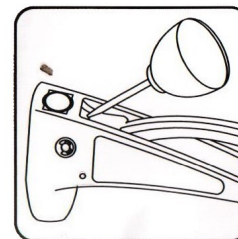
1. Screw rivet nut on the head of mandrel.
2. Insert the rivet nut into workpiece.
3. Squeeze tool handle and that will make rivet nut tightly clench the workpiece.
4. Unscrew the mandrel from rivet nut by turning the mandrel knob counter-clockwise.
5. Now you can fasten a screw in the material with the rivet nut.



CAUTION: When applying rivet nuts to soft materials, it may be necessary to use the Hex Nut to prevent over-compression of the rivet nut which could distort or weaken the work piece.

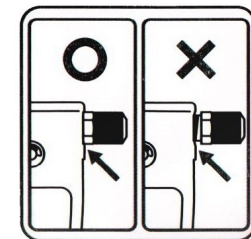
NOTE: Adjust the nose piece in or out of the head of the tool until desired compression is attained, then lock in position by screwing the Hex Nut firmly against head.

MAINTENANCE



Occasional application of ordinary machine oil to the jaw case will ensure smooth movement of parts.

NOTICE



Ensure mandrel is fastened tightly into the jaw case.