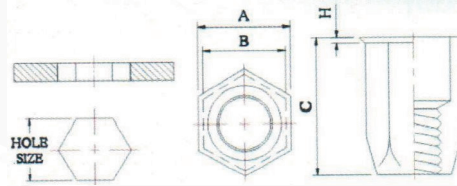


# HEX RIVET NUT Reduced Head



**Material: STEEL Zinc Plated**

THREAD SIZE	GRIP RANGE	HOLE SIZE ± 0.1	A ± 0.3	B max	C ± 0.3	H ± 0.2	Item Code
M4 x 0.7	0.5-2.0	6	7	5.97	11.0	0.6	RNHRHSTL04
M5 x 0.8	0.5-2.5	7	8	6.97	12.0	0.6	RNHRHSTL05
M6 x 1.0	0.5-3.0	9	10	8.97	16.0	0.6	RNHRHSTL06
M8 x 1.25	1.0-3.0	11	12	10.97	18.0	0.6	RNHRHSTL08
M10 x 1.5	1.0-3.5	13	14.5	12.97	19.0	0.8	RNHRHSTL10

**Material: STAINLESS STEEL 304**

THREAD SIZE	GRIP RANGE	HOLE SIZE ± 0.1	A ± 0.3	B max	C ± 0.3	H ± 0.2	Item Code
M4 x 0.7	0.5-2.0	6	7	5.97	11	0.6	RNHRHA204
M5 x 0.8	0.5-2.5	7	8	6.97	12	0.6	RNHRHA205
M6 x 1.0	0.5-3.0	9	10	8.97	16	0.6	RNHRHA206
M8 x 1.25	1.0-3.5	11	12	10.97	18	0.7	RNHRHA208